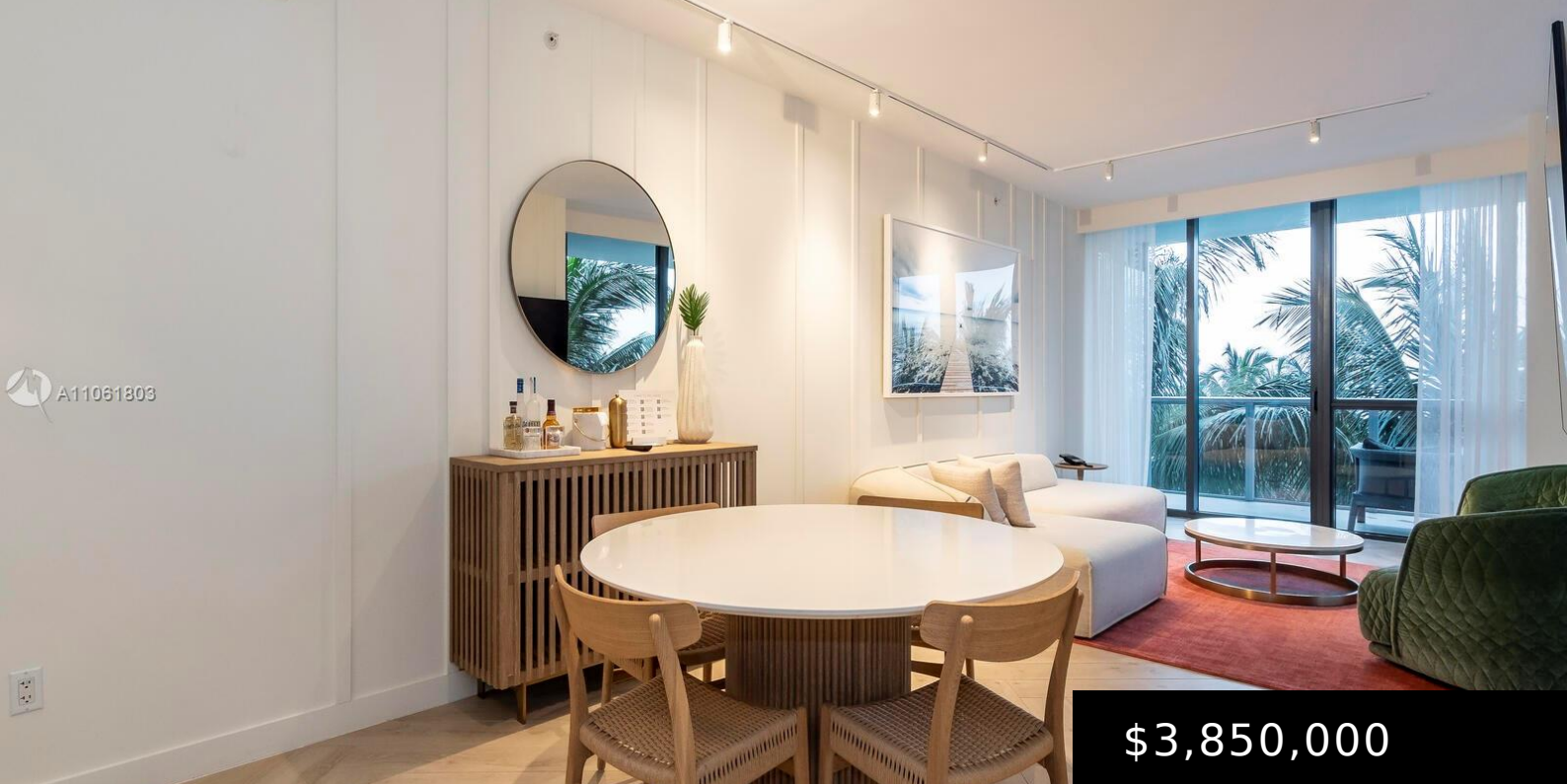


A11061803



\$3,850,000

2201 COLLINS AVE 428 MIAMI BEACH FL 33139

<https://rluxury.com>

A beautiful and spacious 2 bed Oceanfront condo with the famous W Hotel service. Tropical palms and ocean views from this SE corner unit. Stylish finishes and furnishings by Yabu Pushelberg, turn-key. This is truly luxury resort-style living. Enjoy the private owner's beach club, a fantastic pool with poolside service, Bliss Spa, sauna and steam, [...]

- 2 beds
- 2 baths
- Condominium
- Residential
- Active
- 1239 sq ft

Basics

Bathrooms Full: 2

Category: Residential

Status: Active

Bathrooms: 2 baths

Year built: 2009

Lot Size Units: Square Feet

Type: Condominium

Bedrooms: 2 beds

Area: 1239 sq ft



Rooms & Units Description

Unit Number: 428

Property details

Total Building Area: 1239

Subdivision Name: W SOUTH BEACH

Parcel Number: 02-32-34-218-3070

Possession: Closing & Funding

Property Features

Exterior Features: Balcony

Interior Features: Breakfast Bar,Built-in Features,Bedroom on Main Level,Closet Cabinetry,Living/Dining Room,Bar

Waterfront Features: Ocean Access,Ocean Front

Pool Features: Association,Heated

Parking Features: Guest,One Space

Security Features: Fire Sprinkler System

Appliances: Dishwasher,Electric Range,Microwave,Refrigerator

Association Amenities: Basketball Court,Business Center,Cabana,Fitness Center,Library,Pool,Sauna,Spa/Hot Tub,Tennis Court(s),Elevator(s)

Construction Materials: Block

Cooling: Central Air

Cooling Y/N: 1

Covered Spaces: 1

Flooring: Marble

Garage Spaces: 1

Garage Y/N: 1

Heating: Central,Electric

Heating Y/N: 1

Pets Allowed: Conditional,Yes

View: Ocean

View Y/N: 1

Entry Level: 4

Entry Location: 4

Patio and Porch Features: Balcony,Open

Property Attached Y/N: 1

Waterfront Y/N: 1

Stories Total: 20

Utilities: Cable Available



Location Details

County Or Parish: Miami-Dade County

Fees & Taxes

Tax Annual Amount: 42430

Tax Year: 2020

Tax Legal Description: 2201 COLLINS AVE CONDO UNIT 428 UNDIV
0.129548051% INT IN COMMON ELEMENTS OFF REC 26848-2790

**Association Fee
Frequency:** Monthly

Association Fee Includes: Amenities,Common Areas,Cable
TV,HVAC,Insurance,Maintenance Structure

Miscellaneous

Public Survey Township: 2

**Public
Survey
Section:**
34

Syndication Remarks: A beautiful and spacious 2 bed Oceanfront condo with the famous W Hotel service. Tropical palms and ocean views from this SE corner unit.

**Year
Built
Details:**
Resale

Virtual Tour URL:

<https://app.immoviewer.com/landing/unbranded/60e835af8a071e45668a7ea1>

Courtesy of

Office Name: FACCIN Group Realty

